

II. SPECIFICATIONS

1. Vehicle main specifications

Type	SR-182	
Name	Crawler type aerial platform	
Dimension	Length	8,610 mm
	Width	2,460 mm
	Height	2,500 mm
	Turn table turning radius	2,420 mm
	Minimum height from the ground	425 mm
Weight of vehicle	13,500 kg	
Motor	Name & type	Isuzu 4BD1PE - 03
	Maximum output	69.5 ps/2,200 rpm
	Maximum torque	2.4 kgf · m/1,600 rpm
	Total engine displacement	3,856 ℓ
Battery voltage	24 V	
Basket	Live load	250 kg
	Maximum height from the ground	18.0 m
	Maximum working radius	16.5 m
	Platform swing angle	Left 90° ~ right 90°

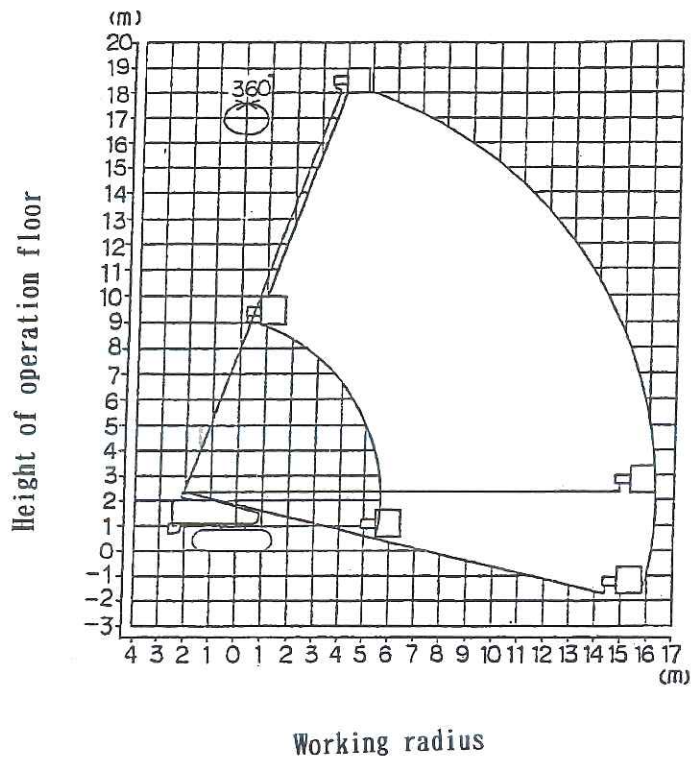
Boom	Elevating angle		-14° ~ 70°
	Boom length		7.19 ~ 16.86 m
	Extension/retraction stroke		9.67 m
	Turning angle		360° full swing
Operation speed	Extension & retraction	Extension	35 sec/str
		Retraction	30 sec/str
	Ups & downs	Up	50 sec/str
		Down	55 sec/str
	Swing		1.1 rpm
	Traveling		0.9 km/h
Pressure	Normal hydraulic pressure		210.140 and 90kg/cm ²
	Hydraulic pump		Gear type 2 kinds

* Dimension and vehicle weight shall be changed without notice.

* Working speed shows the speed when pump revolution is set to about 2,300 rpm with accel switch.

2. Working range

Basket live load is 250 kg.



1. In the above working range, boom bent is not taken into account.
2. The working range is the same in any direction within 360° .
3. The working range shows the case on the leveled and hard ground, and when the wind velocity is less than 16 m/sec.
4. Counter weight is always located on the fixed place.